

**Catalog No.** 0307**Name** Hor Aha *serekh* from Tarkhan**Date (Period)** Dyn. 1**Date (King)** Hor Aha**Dated By** Royal name**Type** Vessel (cylindrical jar)**Method of Inscription** Inked**Material** Pottery**Region** Memphite region**Site** Tarkhan**Locality** Tomb 300**Depository** Petrie Museum ( University College London )**Registration No.** UC16085**Dimensions** 24.7 cm H (object)**References:**

Petrie et al., 1913, Tarkhan I and Memphis V, p. 28, pl. XXXI.70  
Hertz, 1929, pp. 128-129,  
Kaplony, 1963, IÄF, I: p. 293; II: p. 996, n. 1589,  
Kaplony, 1965b, p. 137, pl. XXI  
Kaiser, 1982, pp. 266-267, fig. 15,  
Helck, 1987, p. 177,  
Dreyer, 1992, pp. 259, 261 n. 2,  
Kahl, 1994, p. 194,  
Hendrickx, 1996, p. 60; p. 68, n. 61,  
Wilkinson, 1996, p. 43,  
Hendrickx, 2001, p. 92,  
Mawdsley, 2012, pp. 115-121, p. 116, fig. 3; p. 117, figs. 4-5  
Petrie Museum ( University College London ), UC16085  
Regulski, Database of Early Dynastic Inscriptions,

**Comments**

Although this inscription was identified by Petrie et al 1913 and others as Narmer, Kaplony 1965b and others have identified it as Aha based on infra-red photographs. Mawdsley 2012 has shown conclusively that it should be identified as Aha, and provides a history of its attribution.

Editor's Note: Although it is now clear that this inscription belongs to Aha, it is included here because of the historical controversy.



70

300



Mawdsley, 2012

p. 116, fig. 3; p. 117, figs. 4-5



Mawdsley, 2012

p. 116, fig. 3; p. 117, figs. 4-5



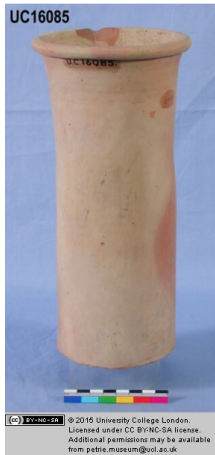
Petrie Museum ( University College London )

UC16085



Petrie Museum ( University College London )

UC16085



Petrie Museum ( University College London )

UC16085